



## How to make a Burrow Flap

Burrow flaps can be made from a range of materials and are fairly easy to assemble.

### Basics you may need:



Hot glue gun



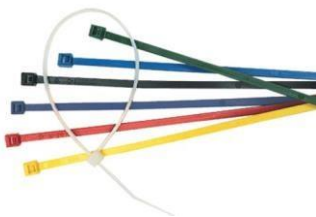
Stanley Knife



Pliers



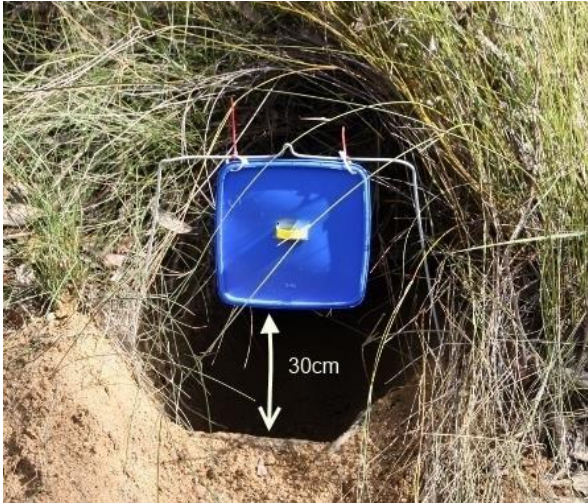
Wire cutters



Cable ties

## Ice cream lids are popular

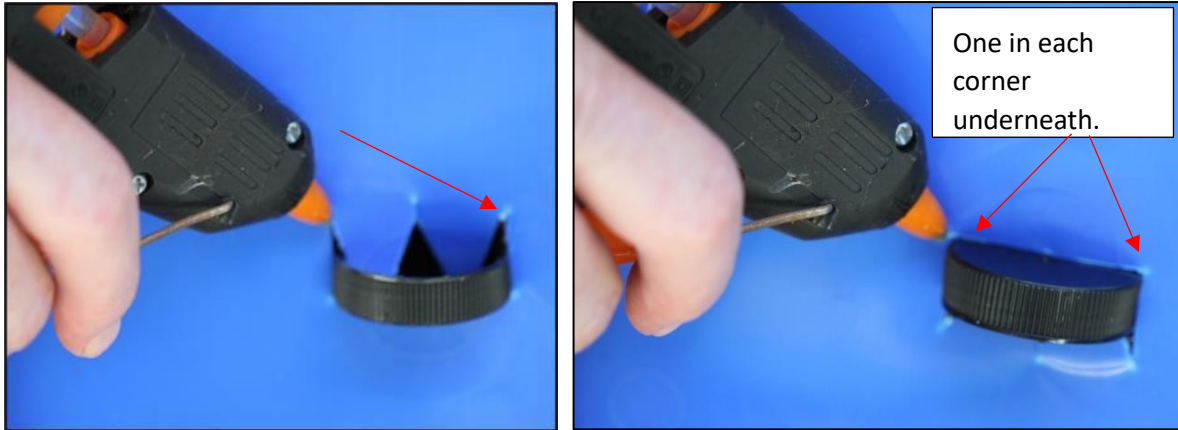
Plastic is light and will blow in the wind, using a small tin will help stabilize it. The diagram shows a bottle top inserted which is too small to hold medication. A small tin as suggested can be inserted using the same method.



Using a Stanley knife (or similar) make a horizontal cut the width of the container to be used (tuna tin etc.), through the centre of the lid. Then vertical cuts the depth of the tin at each end, then more cuts to form a W. This will hold the tin tightly when in place.

Push tin into lid and rotate slightly so that the two fingers are bent either side of the centre of the container.





Using the hot glue gun, place dobs of hot glue where shown, this will hold the tin firmly in place and help prevent the wombat dislodging it.



### Burrow flap set up in front of burrow

Large icecream lid with small tin inserted holds up to 100ml of Cydectin. Flap is attached to wire frame using cable ties.



Showing plastic flap with tin inserted able to swing back and forth.



Flap positioned so wombat just needs to duck it's head to activate.



Wire frame can be expanded and pushed into sides of burrow depending on it's shape.



Very large burrows can be quite challenging and the flap may be best set further into the entrance.

## Corflute Flaps

As mentioned plastic and corflute are quite light and can blow in the wind and spill the Cydectin. The tins add weight, and stability, and reduce the likelihood of spills.



Burrow flap made from corflute with small tin inserted. A ledge for the tin to sit on can be made by attaching extra strips of corflute.

Flap is attached to a wooden stake which has been secured to the ground on both sides of the burrow using metal pegs.



Another example of a corflute flap, tin inserted and suspended from overhanging branch with bailing twine, and stabilized with wire frame.

This is when you can be inventive.



More examples of corflute flaps suspended on wooden stake that has been secured to the ground using metal pegs.

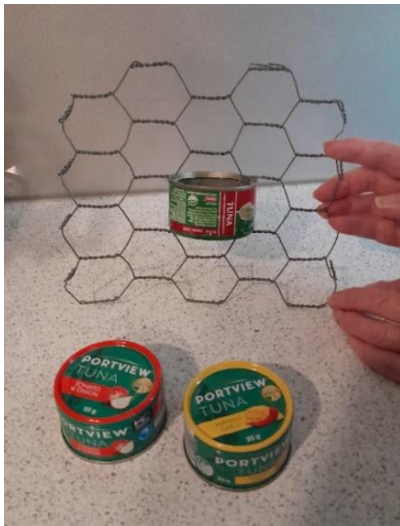


## Reinforced chicken wire is another option

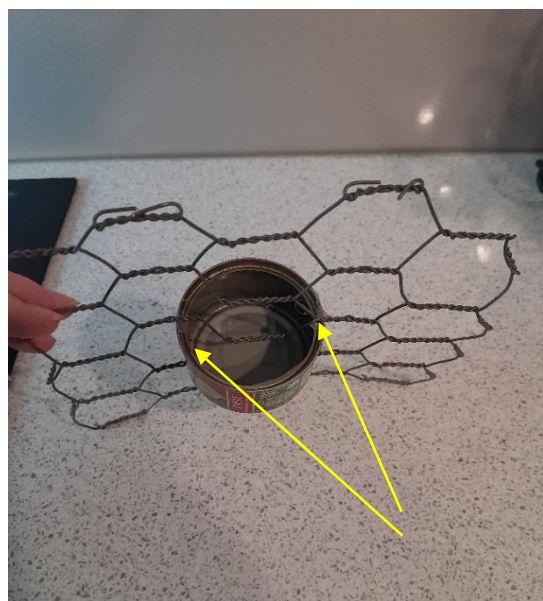
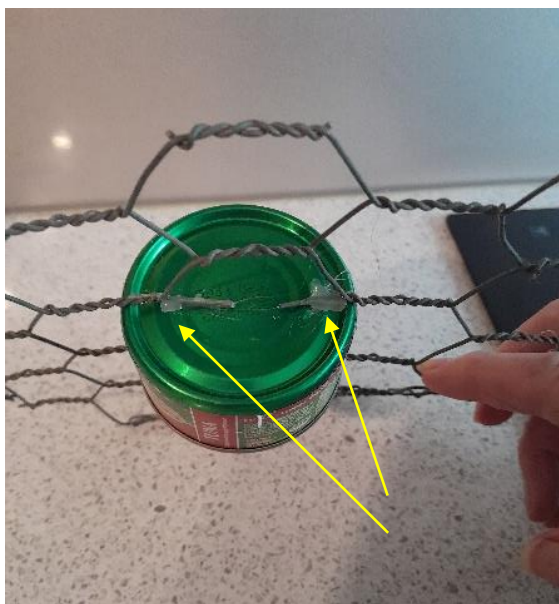
Wire flaps don't blow in the wind and are less conspicuous.

Cut the reinforced chicken wire 23cm x 20cm approximately (*this size fits between a standard wire frame*). The wire mesh could be as long or short as you want depending on the size of the burrow entrance and number of containers you think you need to insert.

- Use pliers to bend up any sharp pieces.
- Insert a container to hold the Cydectin, a small tuna or cat food tin or something similar in size (approximately 100ml).



There are a number of small tins available which hold up to 100ml without spillage .



**Example:** Cut the wire so the tin can fit, and secure in place with some hot glue.



*The wire frame supporting this burrow flap has been inserted into the top of burrow and is another way of positioning the flap. Every burrow is different, and you may need to be inventive.*

Make sure cable ties are tight, to stop the flap from sliding sideways.

A tuna tin has been used to hold the Cydectin. This has been held in place using a hot glue gun.

Always make sure the flap can swing back and forth without snagging on anything.

**Below:** Same burrow and burrow flap but this time installed in front of the burrow.





You can be inventive and come up with your own design.

This large burrow proved challenging and has been targeted with a number of small flaps.

Remember your treatment will only be successful if the flap/s has been positioned properly.

If you discover your burrow flap has been trashed by the wombat it may not have been installed effectively. It could be too low or not stable enough.



This burrow flap was designed using 3D printing and has been set up on a well worn track under a fence and is very successful.



Burrow flap with 3D moulded insert to hold Cydectin is attached using pop rivets.



Photo shows burrow flap set up on well worn track under fence.

## Mange treatment device made from steel





This clever design is strong, doesn't blow in the wind and also has a plastic cover glued in place 3 – 4cm above the medication dispenser to stop rain.

---

A wombat swing gate is another way to treat mange.



The gates have been made to a high quality and are easy to install and once in place not only will they reduce fence damage, they can also be a permanent and easy way of treating mange. All WPSA wombat gates have a mange treatment container included. *Simply fill in the form on our website [www.wombatprotection.org.au/purchases](http://www.wombatprotection.org.au/purchases) For more information [info@wombatprotection.org.au](mailto:info@wombatprotection.org.au)*